



OFFICE SPACE FOR LEASE

Faribo Town Square

201 South Lyndale Avenue, Faribault, MN 55021



Property Description

Faribo Town Square is a historic property in Faribault, Minnesota. After the construction of I-35 in 1975, this former shopping mall was converted into an office complex. The property has seen considerable success serving local residents and an array of businesses wanting to target Southeastern Minnesota.

The exterior of the property is surrounded by a large parking lot with over 500 stalls. Each entrance follows a corridor towards a central plaza where there is a large common area replete with vending, seating and a small kitchenette. Many of the office spaces have windows that look out over this central common area. Vaulted ceilings have a row of skylights which offer natural light throughout the day.

Current Availability

- Suites A-J: 700-6,940 contiguous s.f.
- Suites M-R: 1,275-14,000 contiguous s.f.
- Suite T: 2,650 s.f. | Available 1.1.2020
- Suite U: 1,530 s.f. | Available 1.1.2020
- Suite V: 1,350 s.f. | Available 1.1.2020
- Suite X: 1,430 s.f. | Available 1.1.2020

Amenities

- On-site management and staff
- Versatile space options
- Community-oriented neighborhood and tenant mix
- Huge lighted parking lot with about 500 stalls
- Outside seating
- Prime location in the heart of Faribault
- Clean, comfortable suites with multiple partitioned spaces



ACKERBERG

Beth Dutcher

612-924-6428 | BethDutcher@Ackerberg.com | Ackerberg.com

The Ackerberg Group, 3033 Excelsior Blvd. Ste 10, Minneapolis, MN 55416

Common Areas

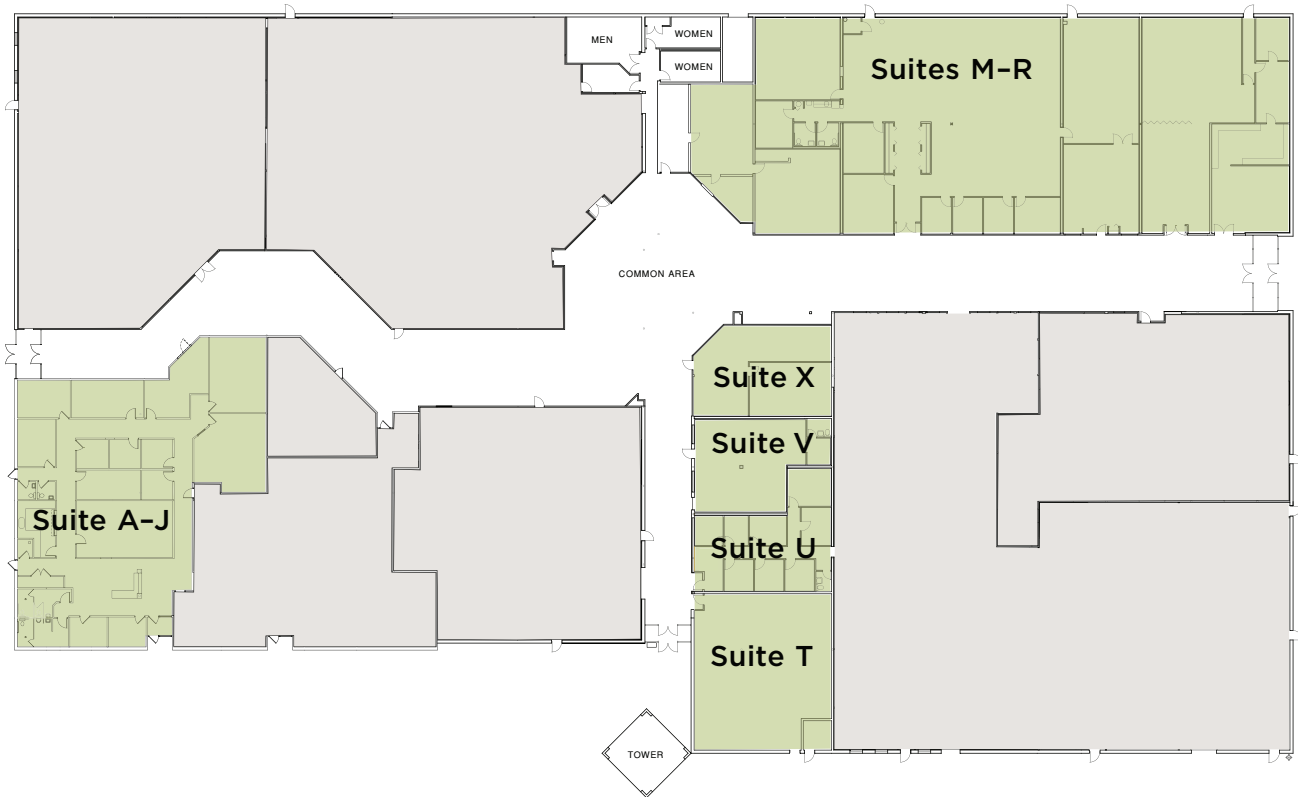


Beth Dutcher

612-924-6428 | BethDutcher@Ackerberg.com | Ackerberg.com

The Ackerberg Group, 3033 Excelsior Blvd. Ste 10, Minneapolis, MN 55416

Floor Plan & Map



Beth Dutcher

612-924-6428 | BethDutcher@Ackerberg.com | Ackerberg.com

The Ackerberg Group, 3033 Excelsior Blvd. Ste 10, Minneapolis, MN 55416